

NOTES:

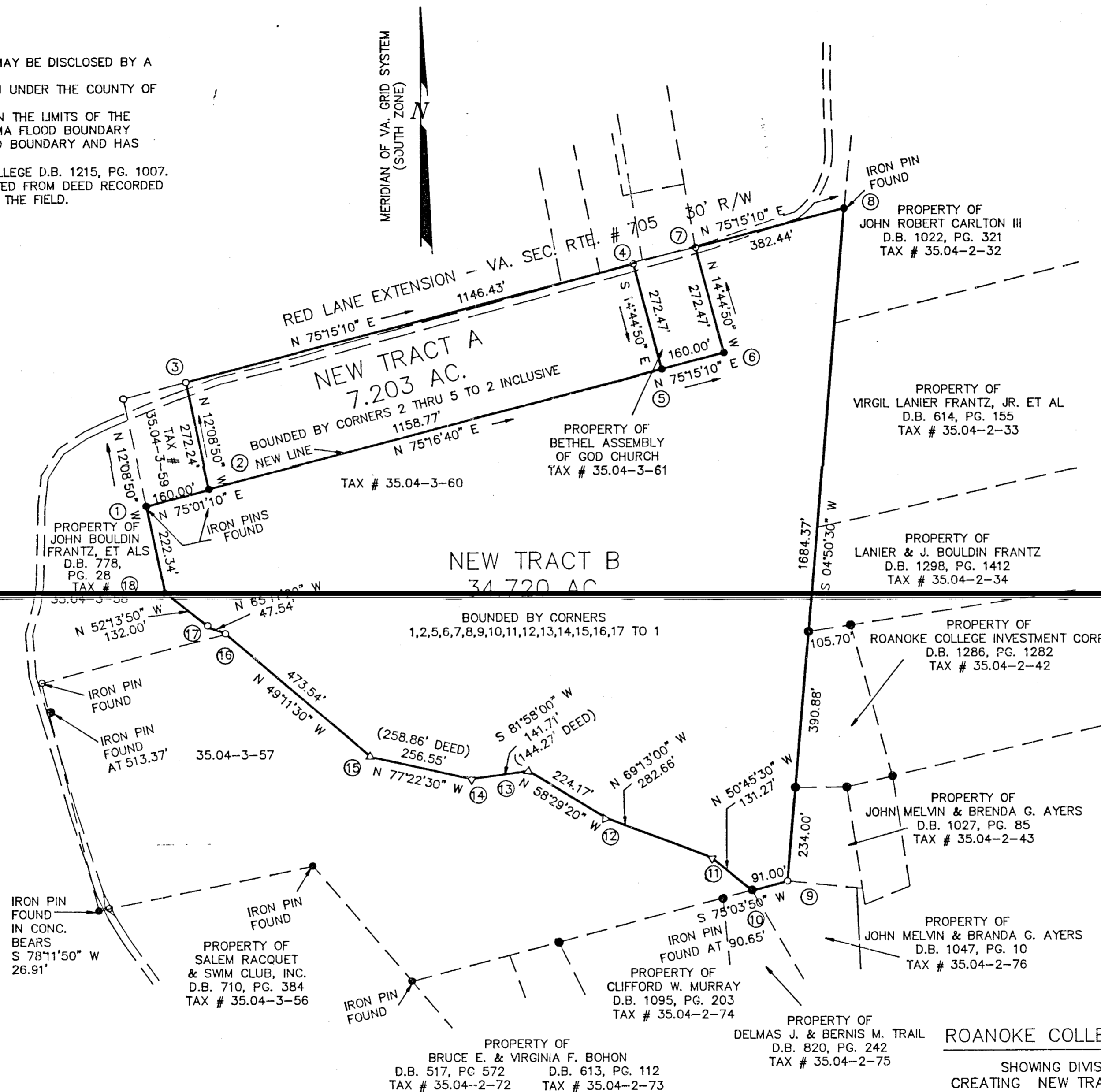
1. THIS PLAT IS SUBJECT TO INFORMATION WHICH MAY BE DISCLOSED BY A TITLE ABSTRACT BY AN ATTORNEY.
2. THIS PLAT DOES NOT CONSTITUTE A SUBDIVISION UNDER THE COUNTY OF ROANOKE SUBDIVISION ORDINANCE.
3. THE SUBJECT PROPERTY IS NOT SITUATED WITHIN THE LIMITS OF THE 100 YEAR FLOOD BOUNDARY AS SHOWN ON THE FEMA FLOOD BOUNDARY MAP. THIS DETERMINATION IS BASED ON THE FLOOD BOUNDARY AND HAS NOT BEEN VERIFIED BY ACTUAL FIELD ELEVATIONS.
4. TAX # 35.04-3-59 PROPERTY OF ROANOKE COLLEGE D.B. 1215, PG. 1007.
5. PROPERTY LINES FROM 10 THRU 16 WERE PLATTED FROM DEED RECORDED IN D.B. 1033, PG. 816 AND WERE NOT SURVEYED IN THE FIELD.

LEGEND:

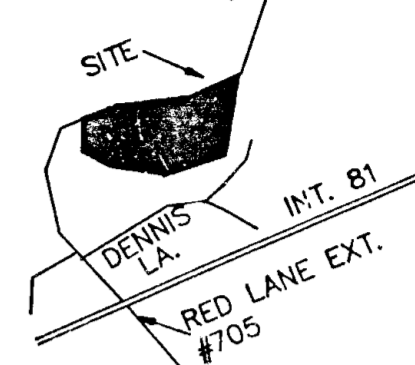
- IRON PIN OR P.K. NAIL SET
- IRON PIN OR PIPE FOUND
- △ CORNER NOT SET

LEGAL REFERENCES:

TAX # 35.04-3-57 D.B. 1011, PG. 70
MAP D.B. 1033, PG. 812
TAX # 35.04-3-59 D.B. 1215, PG. 1007
TAX # 35.04-3-60 D.B. 1033, PG. 815



P.B. 12, PG. 54



LOCATION MAP

COORDINATES

CORNER	NORTHING	EASTING
1	8341.40	7523.98
2	8382.76	7678.54
3	8648.90	7621.25
4	8940.73	8729.91
5	8677.24	8799.27
6	8717.97	8954.00
7	8981.46	8884.64
8	9078.81	9254.48
9	7400.45	9112.32
10	7376.99	9024.39
11	7460.03	8922.73
12	7560.33	8658.46
13	7677.50	8467.35
14	7657.69	8327.03
15	7713.77	8076.68
16	8263.77	7715.95
17	8043.19	7675.11
18	8124.04	7570.76

BOUNDARY COORDINATES SHOWN HEREON ARE ON ASSUMED DATUM. BOUNDARY CONTAINS 41.923 ACRES.

SUBDIVISION FOR
ROANOKE COLLEGE INVESTMENT CORPORATION

SHOWING DIVISION OF A 41.923 ACRE TRACT
CREATING NEW TRACT A, CONTAINING 7.203 ACRES &
NEW TRACT B, CONTAINING 34.720 ACRES

SITUATE RED LANE EXTENSION - VA. SEC. RTE. # 705
CATAWBA MAGISTERIAL DISTRICT
ROANOKE COUNTY, VIRGINIA

T. P. PARKER & SON
ENGINEERS - SURVEYORS - PLANNERS

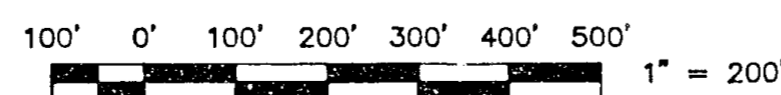
TAX NO. 35.04-3-60
DRAWN: LRD/CADD
CALC: LRD

DATE: DEC. 6, 1989
SCALE: 1" = 200'
W.O. 89-1186
N.B. JR-43

IN THE CLERK'S OFFICE OF THE CIRCUIT COURT OF ROANOKE COUNTY, VIRGINIA THIS MAP WAS PRESENTED WITH THE CERTIFICATE OF ACKNOWLEDGMENT THERETO ATTACHED ADMITTED TO RECORD AT 10:36 O'CLOCK A.M. ON THIS 28TH DAY OF DECEMBER, 1989.

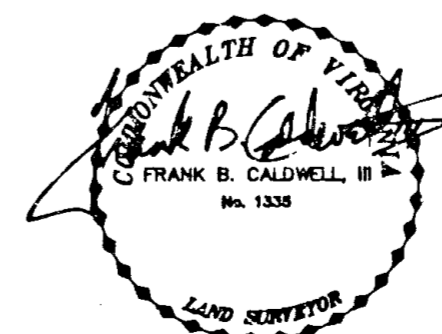
TESTE: ELIZABETH W. STOKES
CLERK

BY: *Wicki M. Puckett*
DEPUTY CLERK



GRAPHIC SCALE

CLOSED 12-5-89 LRD



P.B. 12, PG. 54